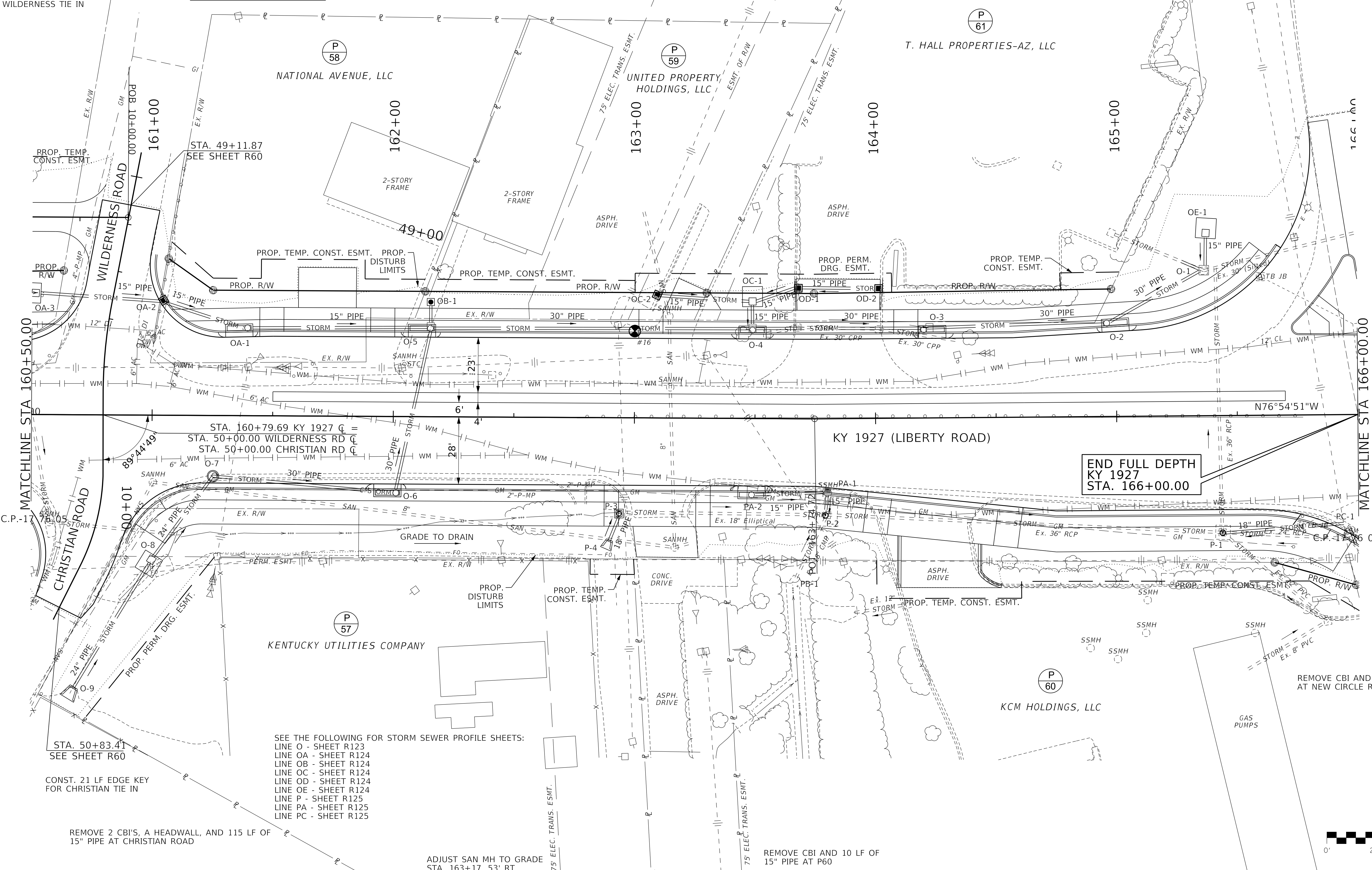
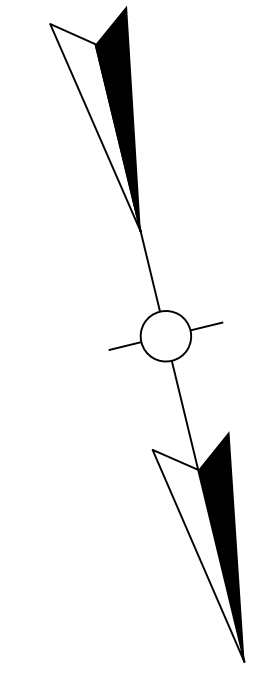


COUNTY OF	ITEM NO.	SHEET NO.
FAYETTE	07-8902	R26

RIGHT OF WAY PLANS

CONST. 25 LF EDGE KEY FOR WILDERNESS TIE IN



MATCHLINE STA 160+50.00

MATCHLINE STA 166+00.00

**END FULL DEPTH
KY 1927
STA. 166+00.00**

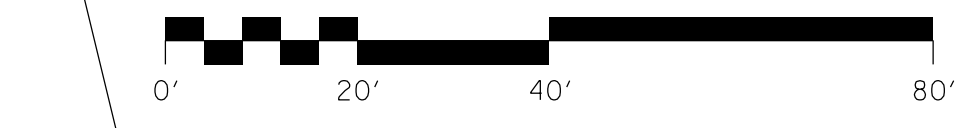
SEE THE FOLLOWING FOR STORM SEWER PROFILE SHEETS:
 LINE O - SHEET R123
 LINE OA - SHEET R124
 LINE OB - SHEET R124
 LINE OC - SHEET R124
 LINE OD - SHEET R124
 LINE OE - SHEET R124
 LINE P - SHEET R125
 LINE PA - SHEET R125
 LINE PC - SHEET R125

CONST. 21 LF EDGE KEY FOR CHRISTIAN TIE IN

REMOVE 2 CBI'S, A HEADWALL, AND 115 LF OF 15" PIPE AT CHRISTIAN ROAD

ADJUST SAN MH TO GRADE STA. 163+17, 53' RT

REMOVE CBI AND 10 LF OF 15" PIPE AT P60



SCALE: 1" = 20'

**KY 1927 (LIBERTY ROAD)
STA. 160+50 TO STA. 166+00
PLAN SHEET**

FILE NAME: S:\LEX15900-559915942\080\DRAWINGS\CAD\MICRO\SHEETS\07_8902_00_PLAN_PROFILE_LIBERTY(1).DGN

USER: ChelseaB
DATE PLOTTED: September 7, 2005

OpenRoads Designer v10.14.4.4

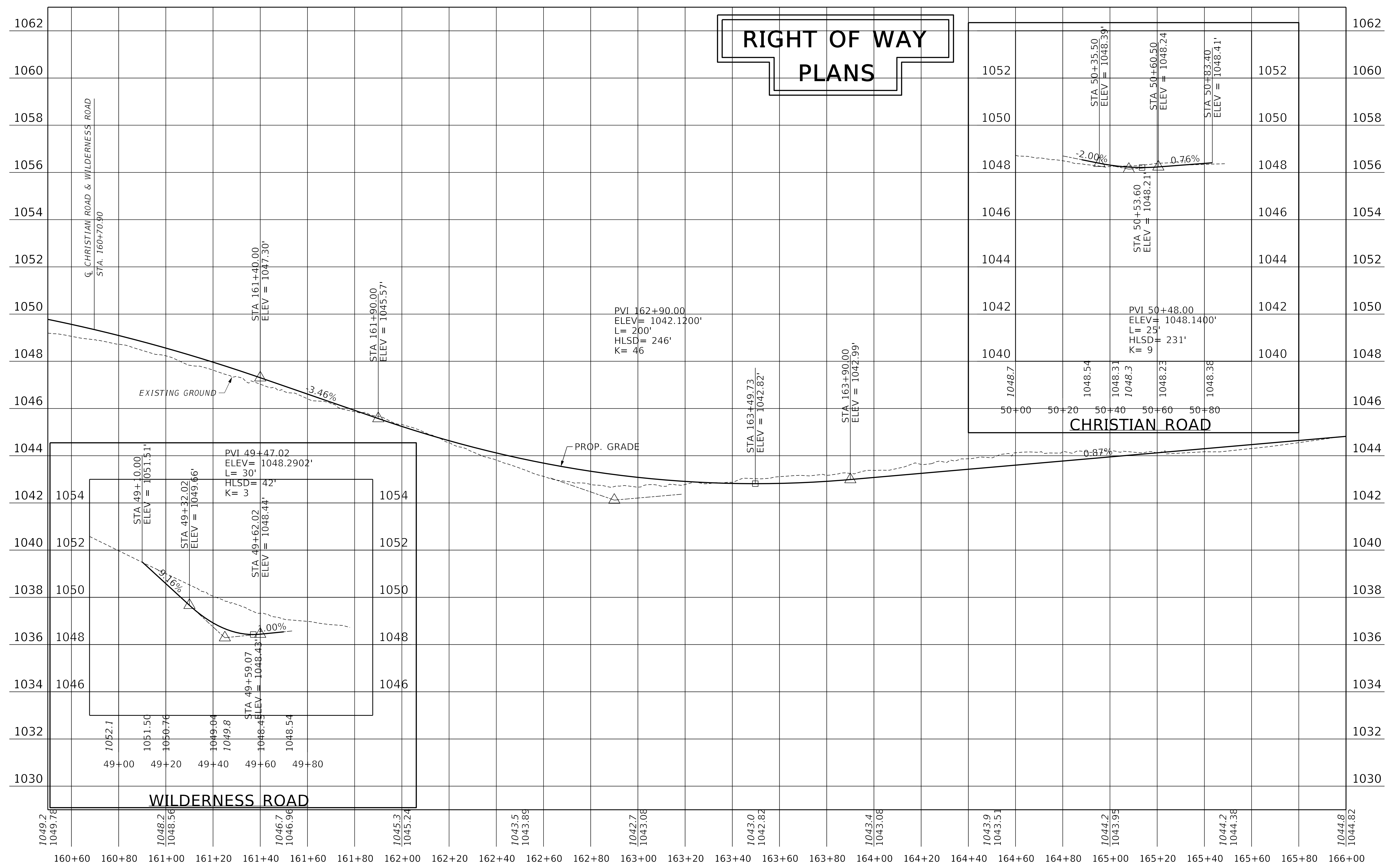
SCALE: 1" = 20' HORIZONTAL
1" = 2' VERTICAL

COUNTY OF	ITEM NO.	SHEET NO.
FAYETTE	07-8902.00	R27

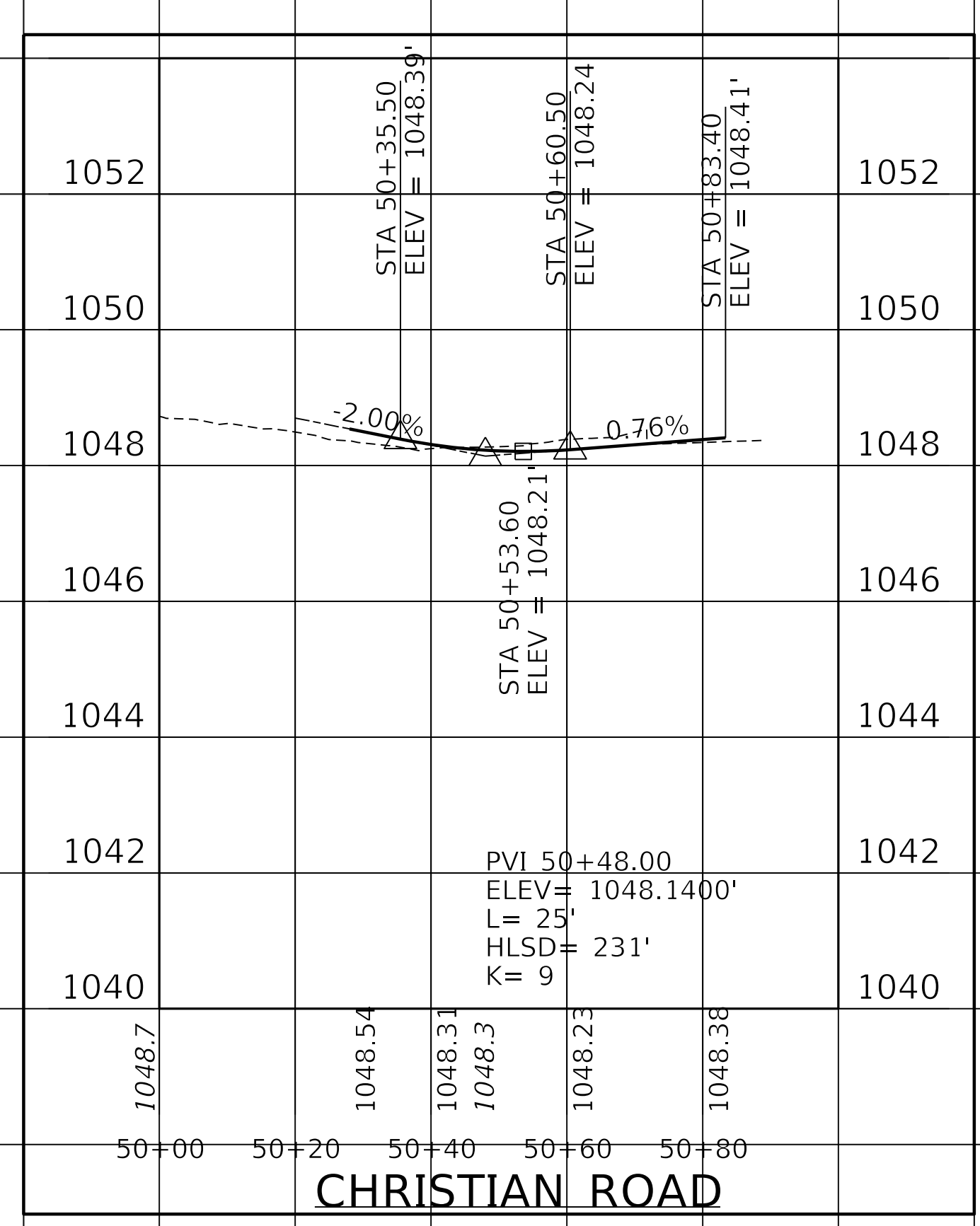
FILE NAME: S:\LEX16900-59916942\060\DRAWINGS\CAD\MICRO\SHEETS\07_8902_00_PLAN_PROFILE_LIBERTY(1)_PVI.DGN

USER: ChelsaeB
DATE PLOTTED: September 7, 2005

OpenRoads Designer v10.14.4.4



**RIGHT OF WAY
PLANS**



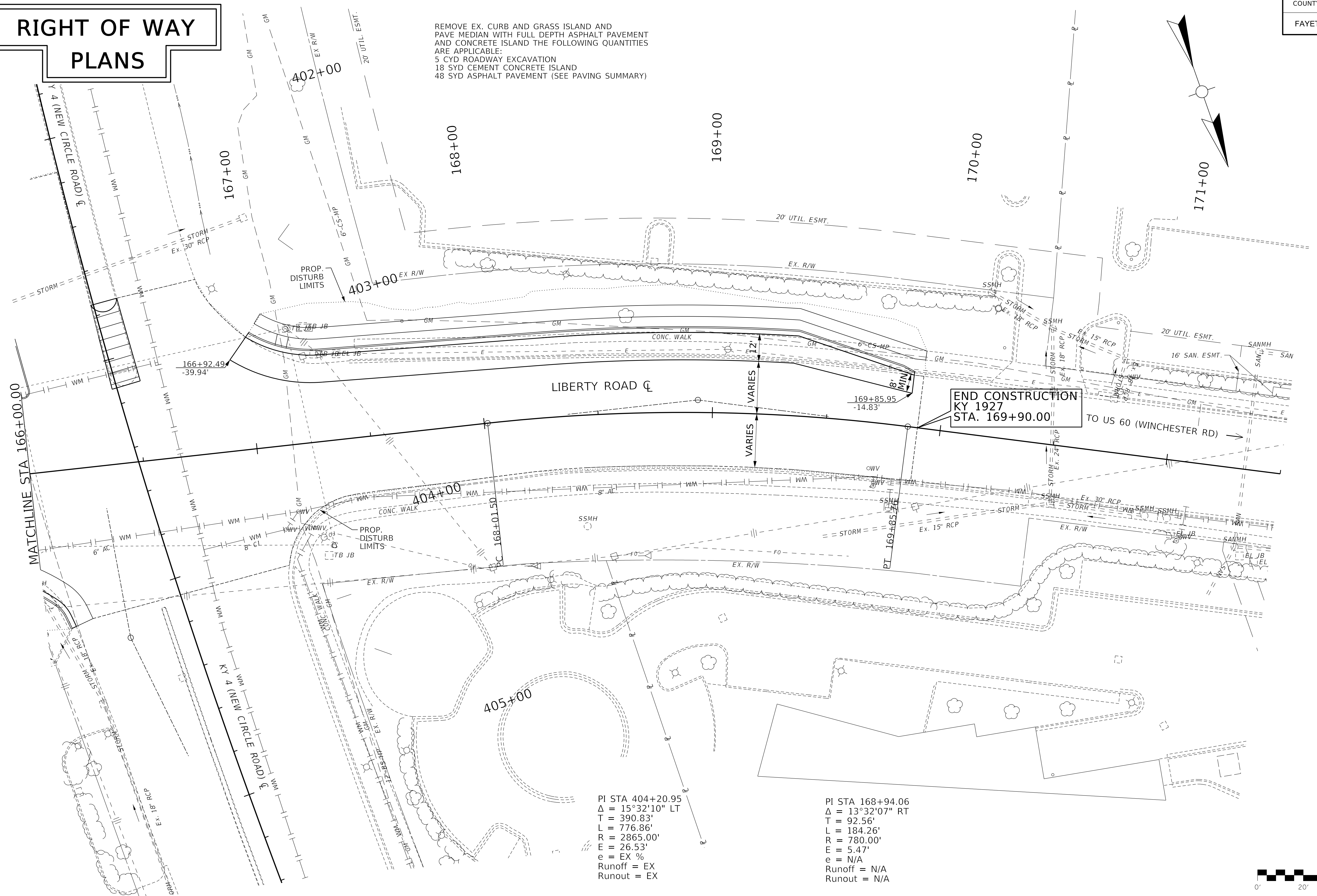
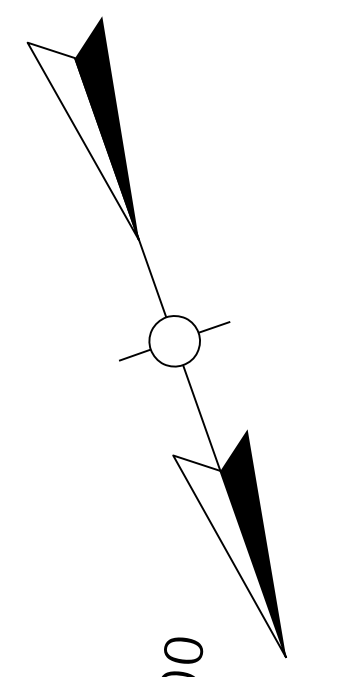
WILDERNESS ROAD

CHRISTIAN ROAD

LIBERTY ROAD
STA 160+50 TO STA 166+00
PROFILE SHEET

RIGHT OF WAY PLANS

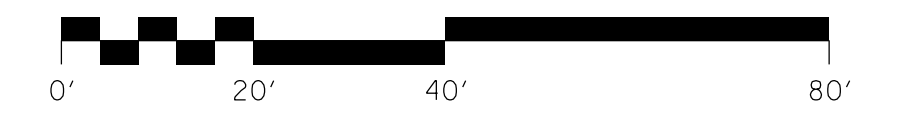
REMOVE EX. CURB AND GRASS ISLAND AND
PAVE MEDIAN WITH FULL DEPTH ASPHALT PAVEMENT
AND CONCRETE ISLAND THE FOLLOWING QUANTITIES
ARE APPLICABLE:
5 CYD ROADWAY EXCAVATION
18 SYD CEMENT CONCRETE ISLAND
48 SYD ASPHALT PAVEMENT (SEE PAVING SUMMARY)



END CONSTRUCTION
KY 1927
STA. 169+90.00

PI STA 404+20.95
 $\Delta = 15^{\circ}32'10''$ LT
 T = 390.83'
 L = 776.86'
 R = 2865.00'
 E = 26.53'
 e = EX %
 Runoff = EX
 Runout = EX

PI STA 168+94.06
 $\Delta = 13^{\circ}32'07''$ RT
 T = 92.56'
 L = 184.26'
 R = 780.00'
 E = 5.47'
 e = N/A
 Runoff = N/A
 Runout = N/A



SCALE: 1" = 20'
 KY 1927 (LIBERTY ROAD)
 STA. 166+00 TO END
 PLAN SHEET

FILE NAME: S:\LEX16900-59916942\060\DRAWINGS\CAD\MICRO\SHEETS\07_8902_00_PLAN_PROFILE_LIBERTY(1).DGN

USER: ChelseaB
 DATE PLOTTED: September 7, 2005

OpenRoads Designer v10.14.4.4

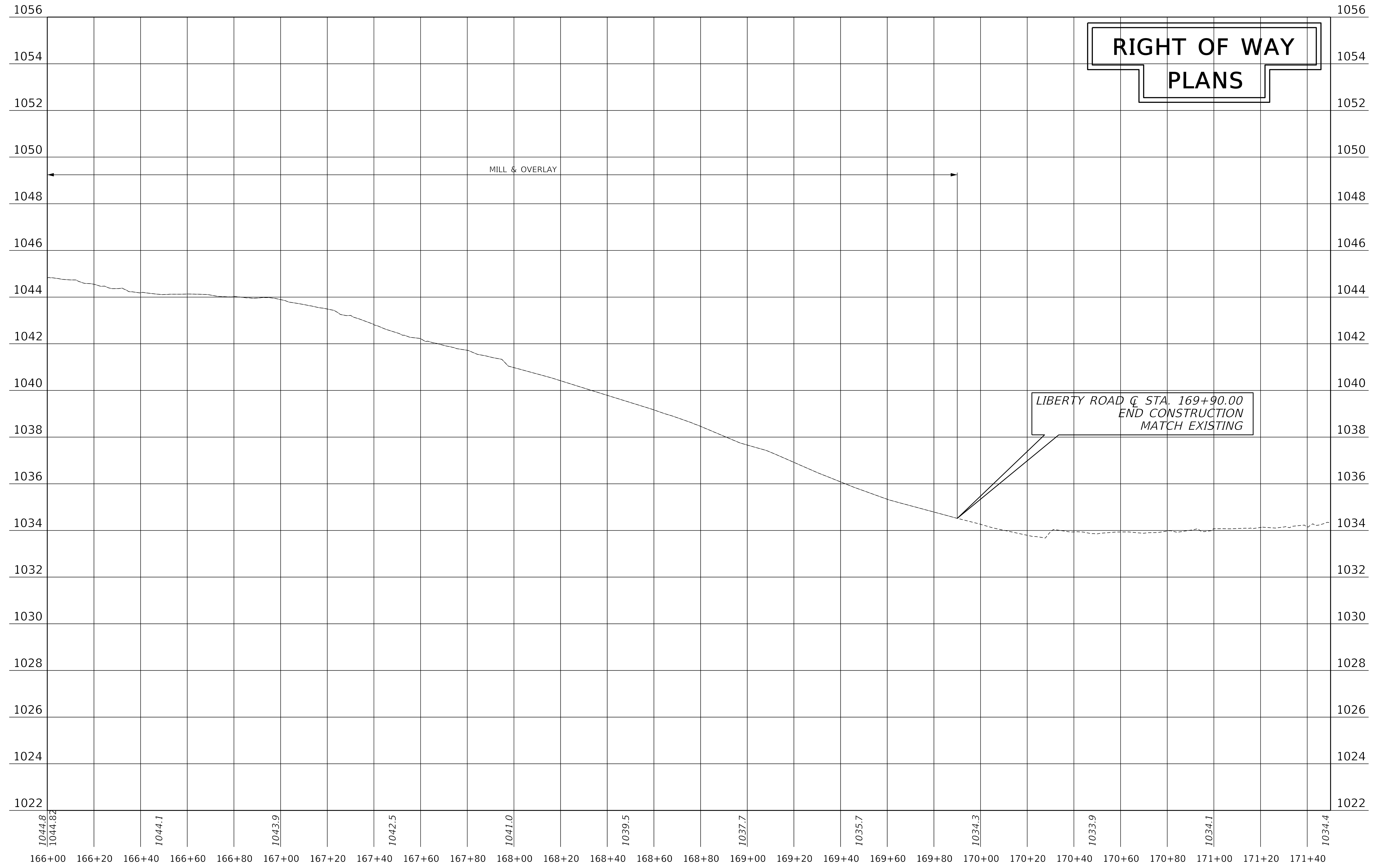
SCALE: 1" = 20' HORIZONTAL
1" = 2' VERTICAL

COUNTY OF	ITEM NO.	SHEET NO.
FAYETTE	07-8902.00	R29

FILE NAME: S:\LEX18900-599916942\080\DRAWINGS\CAD\MICRO\SHEETS\07_8902_00_PLAN_PROFILE_LIBERTY(1).DGN

USER: chelseab
DATE PLOTTED:

OpenRoads Designer v10.14.4.4



**RIGHT OF WAY
PLANS**

LIBERTY ROAD C STA. 169+90.00
END CONSTRUCTION
MATCH EXISTING

LIBERTY ROAD
STA 166+00 TO STA 171+50
PROFILE SHEET